

# 1055

## TELEHANDLER



### Performance

|                             |           |           |
|-----------------------------|-----------|-----------|
| Rated Capacity              | 10,000 lb | 4,536 kg  |
| Maximum Lift Height         | 55 ft     | 16.76 m   |
| Load at Max Height          | 5,000 lb  | 2,268 kg  |
| Maximum Forward Reach       | 42 ft     | 12.8 m    |
| Load at Max Reach           | 3,000 lb  | 1,361 kg  |
| Frame Leveling              | 10°       |           |
| Lift Speed (boom retracted) |           |           |
| Up                          | 14 sec    |           |
| Down                        | 11 sec    |           |
| Boom Speed                  |           |           |
| Extended                    | 16 sec    |           |
| Retracted                   | 15 sec    |           |
| Top Travel Speed (4-Speed)  | 20 mph    | 32 kph    |
| Drawbar Pull (loaded)       | 25,400 lb | 113 kN    |
| Outside Turning Radius      | 14 ft     | 4.3 m     |
| Operating Weight            | 31,559 lb | 14,315 kg |

### Standard Specifications

#### Engine

|                           |                          |        |
|---------------------------|--------------------------|--------|
| Make and Model            | Cummins QSF3.8L Tier 4 F |        |
| No. of Cylinders          | 4                        |        |
| Displacement              | 231.9 cu in.             | 3.8 L  |
| Gross Power Basic         | 130 hp                   | 96 kW  |
| Maximum Torque @ 1500 rpm | 360 lb-ft                | 488 Nm |
| Fuel Tank Capacity        | 38.3 gal                 | 145 L  |

#### Transmission

Powershift 4-speed forward and 3-speed reverse.

#### Axles

Trunnion mounted planetary 55° steer axles. Integral steer cylinder.  
High bias limited slip differential on front axle.

#### Brakes

Service brakes are inboard wet disc brake on front and rear axles.  
Parking brakes are wet disc spring-applied hydraulic release on front axle.

#### Tires

|          |                      |
|----------|----------------------|
| Standard | 400/75-28            |
| Optional | Foam-Filled or Solid |

#### Cab

- Certified ROPS/FOPS structure
- Horn
- Tilt & declutch on joystick
- Adjustable seat
- Single joystick controls
- Anti-theft

#### Steering 4-Wheel

Hydraulic power steering with manual backup.  
Operator selectable 4-wheel circle, 4-wheel crab, 2-wheel front.

#### Instruments

- Volt meter
- Engine oil pressure gauge
- Fuel gauge
- Hourmeter
- Temperature gauge
- DEF gauge

#### Hydraulic System-Implement

|          |          |       |
|----------|----------|-------|
| Capacity | 48.6 gal | 184 L |
|----------|----------|-------|

Load sense piston pump. Auxiliary hydraulics used for all attachments equipped with cylinders or other hydraulic components.

### Accessories & Options

- Enclosed Cab
- Auxiliary Electrics
- Road Lights
- Air Conditioning
- Work Lights
- Rotating Beacon
- Hydraulic Coupler
- Fenders
- Brick Guards
- Arctic Package
- Multi-Function Display with Reversing Camera
- Ride Control
- Reverse Sensing System
- Boom Brushes
- Secondary Steering
- Wiper Package
- Positive Air Shut Off
- Non-Marking Tires

### Attachments

|                                |   |  |
|--------------------------------|---|--|
| Standard Carriage              | 50 in.<br>60 in.<br>72 in.  | 1.3 m<br>1.5 m<br>1.8 m  |
| Side-Tilt Carriage             | 50 in.<br>60 in.<br>72 in.  | 1.3 m<br>1.5 m<br>1.8 m  |
| Swing 90° or 180° Carriage     | 72 in.  | 1.8 m  |
| Dual Fork Positioning Carriage | 50 in.  | 1.3 m  |
| Side-Shift Carriage            | 50 in.  | 1.3 m  |
| Tower                          | 8 ft  | 2.4 m  |
| Tower with Side Tilt           | 8 ft  | 2.4 m  |
| Pallet Forks                   | 2.36 in. x 4 in. x 48 in.<br>2.36 in. x 5 in. x 48 in.<br>2.00 in. x 6 in. x 72 in. | 60 mm x 102 mm x 1.2 m<br>60 mm x 127 mm x 1.2 m<br>51 mm x 152 mm x 1.8 m |
| Lumber Forks                   | 2.00 in. x 7 in. x 60 in.<br>2.36 in. x 6 in. x 60 in.                              | 51 mm x 178 mm x 1.5 m<br>60 mm x 152 mm x 1.5 m                           |
| Cubing Forks                   | 2 in. x 2 in. x 48 in.  | 51 mm x 51 mm x 1.2 m  |
| Fork Extensions                | 90 in.  | 2.3 m  |
| Material Bucket                | 72 in., 1.0 cu yd<br>96 in., 1.5 cu yd<br>102 in., 2.0 cu yd                        | 1.8 m, 0.76 m³<br>2.4 m, 1.15 m³<br>2.6 m, 1.53 m³                         |
| Grapple Bucket                 | 96 in., 1.75 cu yd  | 2.4 m, 1.34 m³   |
| Truss Boom                     | 3 ft (winch), 4,000 lb Capacity   | 0.9 m, 1,814 kg Capacity   |
| Truss Boom                     | 12 ft, 2,000 lb<br>15 ft, 2,000 lb<br>12 ft with winch, 2,000 lb                    | 3.7 m, 907 kg<br>4.6 m, 907 kg<br>3.7 m, 907 kg                            |
| Fork-Mounted Work Platform     | 8 ft, 6,000 lb Capacity   | 1.8 m, 2,722 kg Capacity   |
| Pipe Grapple                   | 72 in., 6,000 lb Capacity   | 2.4 m, 2,722 kg Capacity   |
| Bucket-Fork Mounted            | 60 in., 1.3 cu yd   | 1.5 m, 1.0 m³  |
| Material Handling Arm          | 4,000 lb Capacity   | 1,814 kg Capacity  |
| Trash Hopper                   | 72 in., 1.9 cu yd   | 1.8 m, 1.5 m³  |
| Lifting Hook-Fork Mounted      |   |  |
| Lifting Hook-Coupler Mounted   |   |  |
| Fork-Mounted Extendable Truss  |   |  |

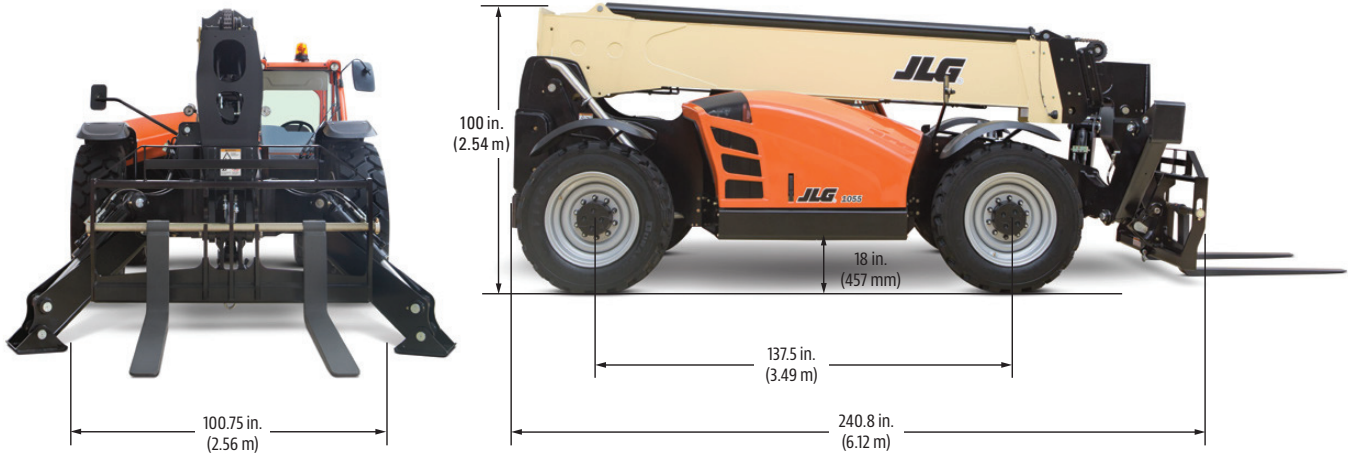
# 1055

TELEHANDLER

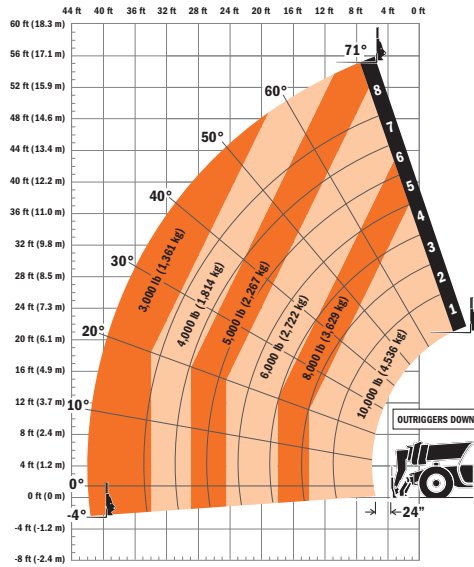
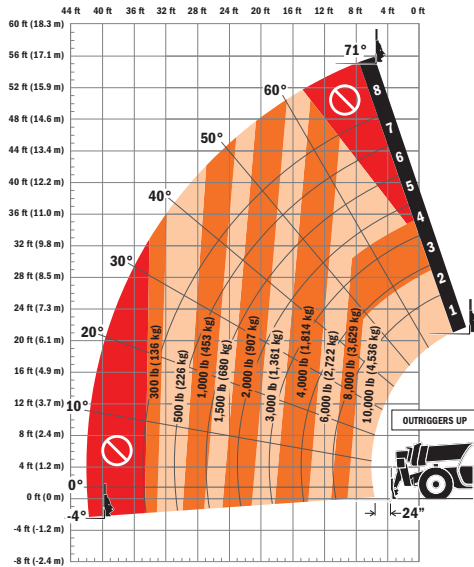


## Dimensions

All dimensions are approximate.



## Load Chart



## The JLG "1, 2 & 5" Warranty

We provide coverage for one (1) full year on the entire machine, two (2) full years or 2,000 hours on the drivetrain and cover all specified major structural components for five (5) years. Due to continuous product improvements, we reserve the right to make specification and/or equipment changes without prior notification.

Part No.: 3132243  
RT11803  
Printed in USA



**JLG Industries, Inc.**  
1 JLG Drive  
McConnellsburg, PA 17233-9533  
Telephone 717-485-5161  
Toll-free in US 877-JLG-LIFT  
Fax 717-485-6417  
[www.jlg.com](http://www.jlg.com)

**An Oshkosh Corporation Company**