

Model

# 600 Crawler Series

TELESCOPIC  
BOOM LIFTS

JLG

## Features

36 x 96 in. (0.91 x 2.44 m) Platform  
SkyPower® Package  
Deutz F4M1011F 65 hp Engine  
Customized Crawler Chassis  
19 x 138 in. (0.48 x 3.5 m)  
Steel Link Tracks  
Inward Swing Gate  
180 Degree Hydraulic Platform Rotator<sup>1</sup>  
Platform Console Machine Status  
Light Panel<sup>2</sup>  
110V-AC Receptacle in the Platform  
5 Degree Tilt Alarm/Indicator Light  
Swing-Out Engine Module  
Gull-wing Engine Hood  
12V-DC Auxiliary Power  
Proportional Controls  
Lifting/Tie Down Lugs  
Hourmeter  
Bolt-On Lifting Lugs  
Horn  
All Motion Alarm

## Accessories & Options

36 x 72 in. (0.91 x 1.83 m) Platform  
Platform Work Lights  
Bolt-on Aluminum Mesh to Top Rail  
Light Package  
Flashing Amber Beacon  
Cold Weather Start Kit<sup>3</sup>  
Hostile Environment Kit<sup>4</sup>

1. 160 degrees on 600SC
2. Provides indicator lights at platform control console for system distress, low fuel, 5 degree tilt light and foot switch status.
3. Includes engine block heater (CAT), battery heater and oil tank heater.
4. Includes console cover, boom wipers and cylinder bellows.



## Conquers the tough terrain

- Crawler undercarriage with two track choices: steel and detachable rubber pads
- Improved 55% gradeability

## Improved Positioning

- Intuitive single-drive/steer joystick control
- Counter rotation feature allows tracks to travel in opposite directions for a zero turning radius
- Versatile articulating jib (model 660SJC) provides a wider range of motion

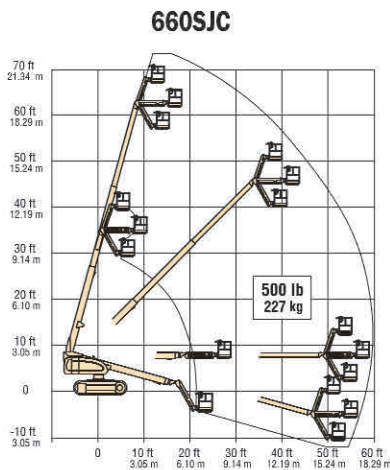
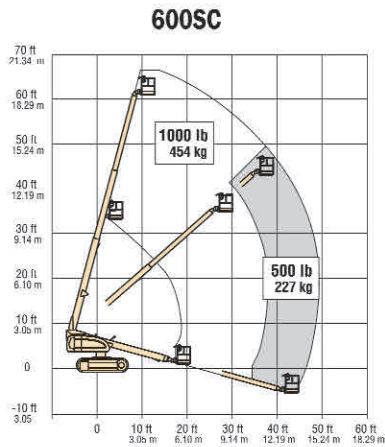
## Increased Flotation

- Large surface area distributes machine weight for a low ground bearing pressure
- Improved maneuverability on soft or sensitive surfaces

# Model 600 Crawler Series

## TELESCOPIC BOOM LIFTS

### Specifications



#### Reach

Platform Height	
600SC	60 ft 3 in. (18.36 m)
660SJC	66 ft 8 in. (20.32 m)

Horizontal Outreach	
600SC	49 ft 6 in. (15.09 m)
660SJC	56 ft 9 in. (17.30 m)

Swing 360 Degrees Continuous

Platform Capacity	
Unrestricted	500 lb (227 kg)
Restricted (600SC Only)	1,000 lb (454 kg)

Platform Rotator	
600SC	160 Degrees Hydraulic
660SJC	180 Degrees Hydraulic

Jib (Range of Articulation)	
660SJC Only	132 Degrees (+71, -61)

#### Dimensions

A. Platform Size	36 x 96 in. (0.91 x 2.44 m)
B. Overall Width	8 ft 2 in. (2.49 m)
C. Tailswing	3 ft 8 in. (1.12 m)
D. Stowed Height	8 ft 5 in. (2.57 m)

E. Stowed Length	
600SC	27 ft 11 in. (8.51 m)
660SJC	33 ft 6 in. (10.21 m)
F. Ground Clearance	15 in. (38 cm)

Weight*	
600SC	22,500 lb (10,206 kg)
660SJC	27,100 lb (12,293 kg)

Max. Ground Bearing Pressure	
600SC	5.45 psi (0.383 kg/cm <sup>2</sup> )
660SJC	6.5 psi (0.457 kg/cm <sup>2</sup> )

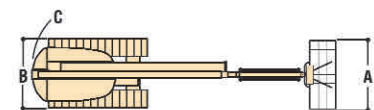
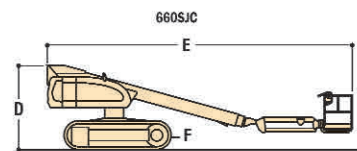
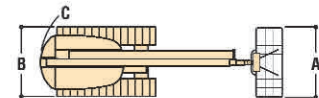
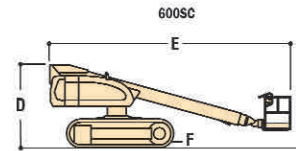
\*Certain options or country standards will increase weight.

#### Chassis

Drive Speed	1.6 mph (2.6 kmph)
Gradeability	55%
Turning Radius	Zero
Type of Tracks	Steel
Optional detachable rubber pads	
Tracks Width	20 in. (51 cm)

#### Power Source

Diesel Engine	
Deutz F4M1011L	65 hp (48 kW)
Diesel Engine	
Caterpillar 3044C	63.3 hp (47.2 kW)
Fuel Tank Capacity	40 gal. (151 L)
Hydraulic Reservoir	32 gal. (121 L)
Auxiliary Power	12V DC



#### The JLG 1 & 5 Warranty

JLG Industries, Inc. backs our products with our exclusive "1 & 5" Warranty. We provide coverage on all products for one (1) full year, and cover all specified major structural components for five (5) full years. Due to continuous product improvements, we reserve the right to make specification and/or equipment changes without prior notification. These machines meet or exceed applicable OSHA Regulations in 29 CFR 1910.67, 29 CFR 1926.453, and ANSI A92.5-1992 as originally manufactured for intended applications.



**JLG Industries, Inc.**  
 1 JLG Drive  
 McConnellsburg, PA 17233-9533  
 Telephone 717-485-5161  
 Toll-free in US 877-JLG-LIFT  
 Fax 717-485-6417  
[www.jlg.com](http://www.jlg.com)